

**Northern White Cedar** log home packages



**The Alpine** ( 1118 Sq.Ft. )

<b>First Floor</b>	<b>728</b>	<b>Loft</b>	<b>390</b>	<b>Garage</b>	<b>None</b>	<b>Bedrooms</b>	<b>2</b>	<b>Baths</b>	<b>1</b>
--------------------	------------	-------------	------------	---------------	-------------	-----------------	----------	--------------	----------



Custom Alpine shown above .

Features

- **One of our most popular “base” designs . We’ve made many, many versions of this one!**
- **Great for a Cottage, Ski Chalet or small Home.**
- **Open concept with half loft.**

***Custom Idea? The picture above with the balcony Option—has the loft floor extending full length and width—thus access to a balcony at the front. You could keep the half loft and add a balcony off the loft bedroom. Picture to the left has Optional windows in the gable, covered deck area and an added dormer.***

**Contact Us**

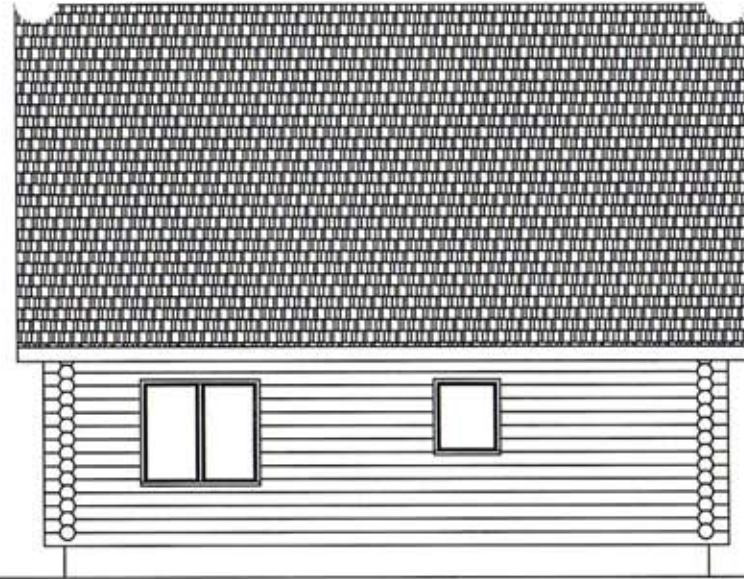
Head Office: info@kenomee.com 1-800-565-0882 902-647-2080 Fax: 902-647-2812

Ontario Office: kenomeeon@xplornet.com 1-888-355-6363 613-489-0643 Fax: 613-489-0893

*The Alpine*



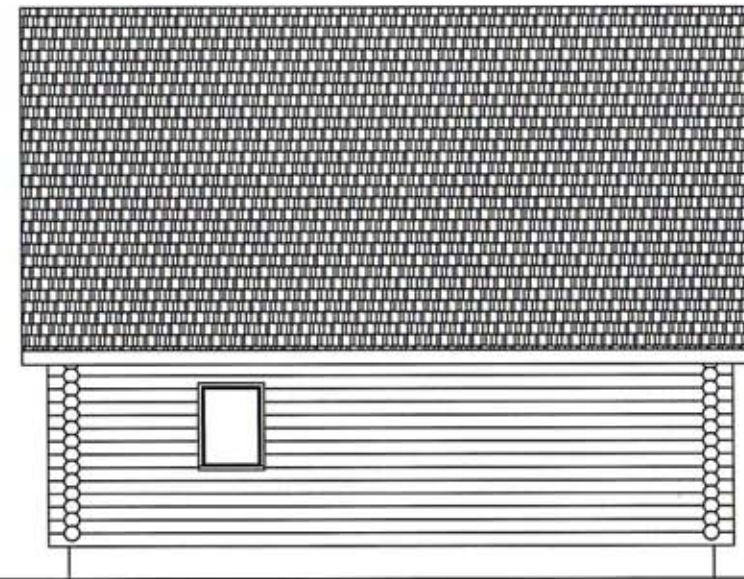
FRONT ELEVATION



RIGHT SIDE ELEVATION

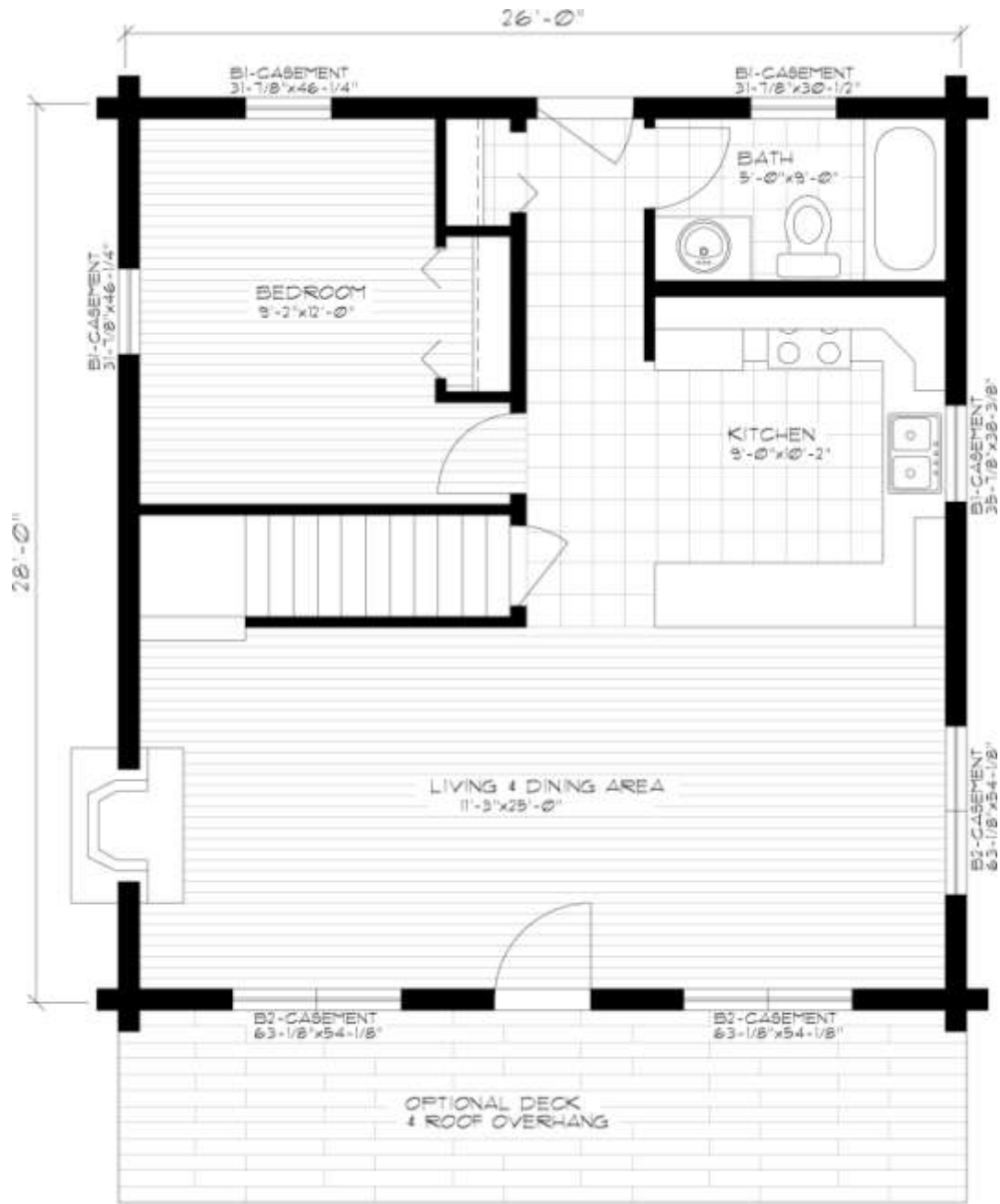


BACK ELEVATION



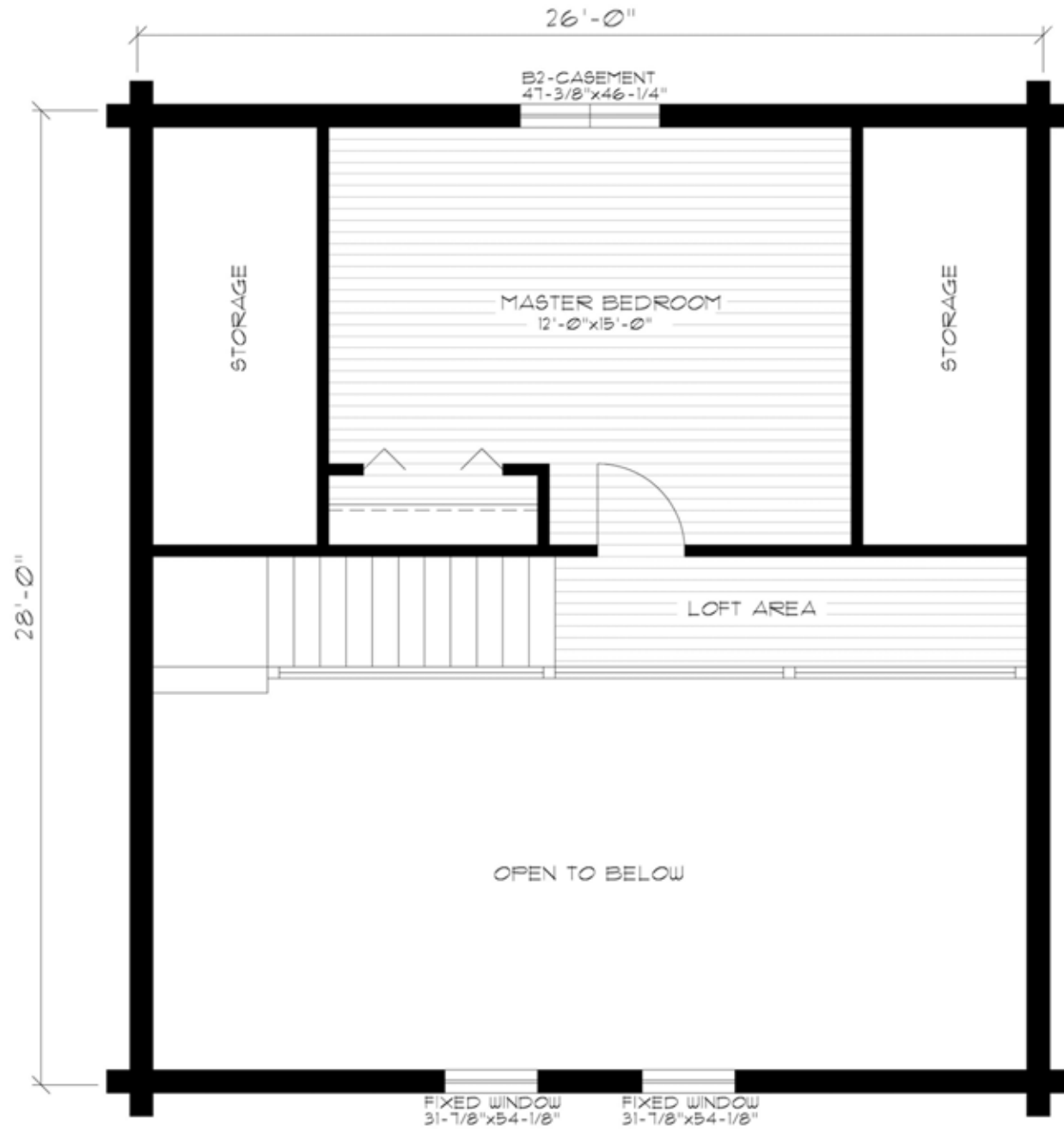
LEFT SIDE ELEVATION

# The Alpine ( main floor 728 Sq.Ft. )



MAIN FLOOR PLAN

*The Alpine* (Loft 390 Sq.Ft.)



2ND FLOOR PLAN